

Kitchen Faucet

SPECIFICATIONS

Standard Features

- Ceramic Disc Cartridge
- Deckmount 8" Centers
- Copper Brass Body
- Chrome Plated
- 8" Brass D Swing Spout
- 2.0 gpm @ 60 psi Flow-down Aerator

Codes / Standards

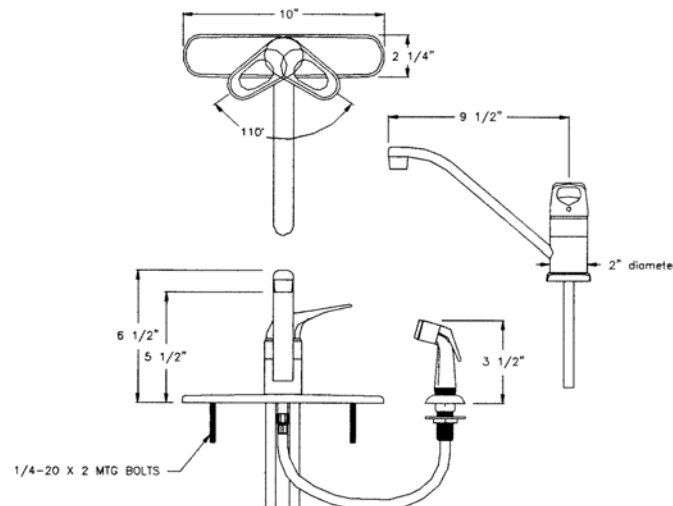
Briggs / Sayco Faucets are designed and manufactured to comply with the following requirements:

- ANSI A112.18.M
- ANSI A117.1 (ADA – Lever Handle Models)
- ASSE 1025
- CSA B125
- NSF 61

Specified Model Number



FEATURES	801	805
½" IPS Male Adapters	X	X
8" Deck mount less spray	X	
8" Deck mount with spray		X
Blade Lever Handle	X	X
Chrome Finish	X	X





Kitchen Faucet

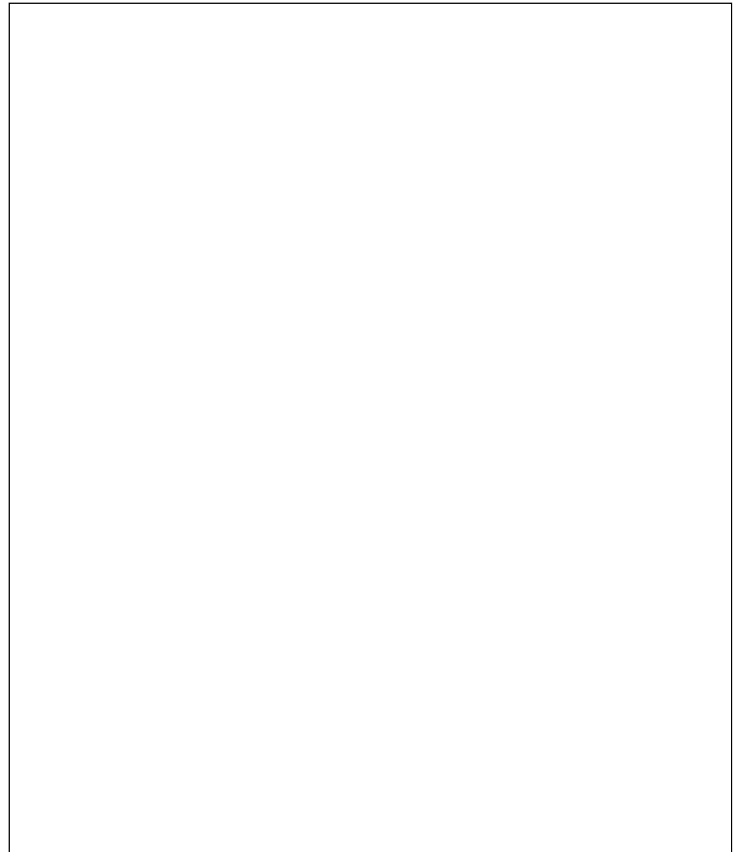
ILLUSTRATED PARTS

Model Number(s)

801

805

#	PART	DESCRIPTION
1	D010	AERATOR
2	I327	METAL BLADE HANDLE
3	I318	DOME CAP
4	I310	35MM NUT
5	I317	35MM CARTRIDGE
6	I306	SLEEVE
7	P345	D SPOUT WITH AERATOR
8	I163	DIVERTER ASSEMBLY
9	I024	O-RINGS (2 NEEDED)
10	I011	CARRIAGE BOLT
11	P782	NUT
12	D059	SPRAY HOSE ASSEMBLY
13	I326	DECKPLATE NO HOLE FOR SPRAY
	I326MP	DECKPLATE WITH HOLE FOR SPRAY
14	I305	BOTTOM GASKET



NOTE: See Accessories Section For Additional Handle Options at www.saycofaucets.com

