

# Altima™

## Elongated Two-piece Toilet 4233

---

# BRIGGS®

### Features

- Vitreous China
- 12" (305 mm) rough-in
- 1.6 gpf/6.0 Lpf
- Premium color-matched trip lever
- R&T® fittings
- Angular tank design
- Toilet seat sold separately

### Models

#### 4233 Combination:

4325 Altima Elongated front bowl  
Shipping weight: 44 lbs (20 kg)

4450 Altima 12" Rough-In tank  
Shipping weight: 36 lbs (16 kg)




### Colors

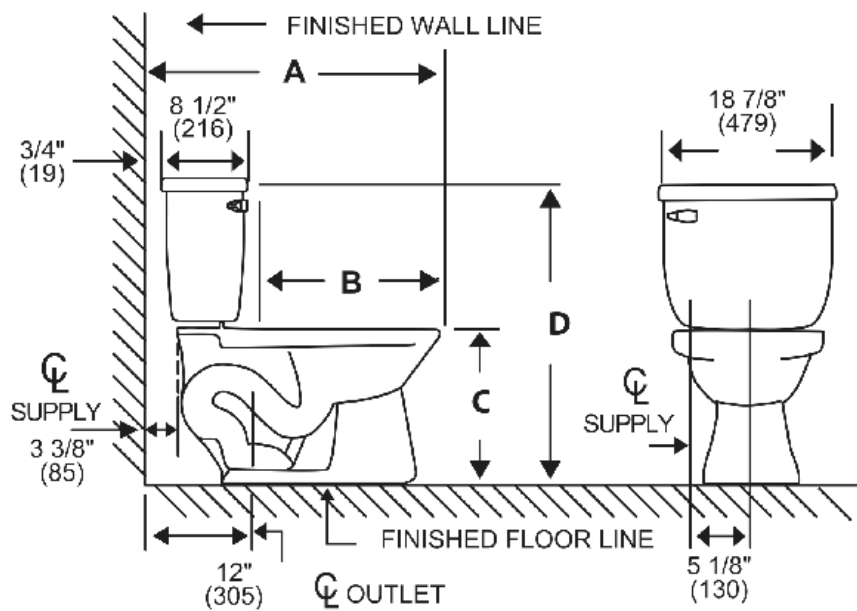
- ☐ White (130)
- ☐ Biscuit (235)
- ☐ Bone (733)

### Codes & Standards

Meets or exceeds the following:

- ASME A112.19.2
- CSA B45.1
- IAPMO/cUPC 

Specifications



A 29 1/8" (740)    B 18 1/2" (470)    C 14 3/4" (375)    D 29 3/8" (746)			
--	--	--	--

Material	Ceramic
Rough-In	12" (305mm)
Water Usage	1.6 gpf
Water Pressure Range	20/50/80 PSI
Flush System	2" Single Flush
Water Surface Area	≥ 125 * 100 mm
Trap Diameter	≥ 1 7/8"

Trap Seal	≥ 51 mm
Shipping Weight	Tank: 16 kg/ PCS Bowl: EL: 20 kg/ PCS
Warranty	Ceramic: Lifetime Tank fittings: 1 year

Dimensions may vary (+) or (-) 1/4". Dimensions shown in parentheses are in millimeters: 25.4 mm = 1 inch. Note: Fixture dimensions are nominal and conform with dimension and performance requirements of ASME A112.19.2-2008/CSA B45.1-08 standards. PSI rating: 20 minimum to 80 maximum per ASME A112.19.2-2008/CSA B45.1-08 standards. Dimensions subject to change or cancellation without notice. Briggs is not responsible for the use of superceded or voided specification information.