

## Features

- 5" backsplash
- 4" or 8" centers available
- 120" x 18" Wall-mounted lavatory
- Punched for concealed arm carrier (sold separately)
- ADA Compliant
- Faucet not included
- 5-year warranty



## Codes & Standards

Meets or exceeds the following:

- ASME A112.19.2
- CSA B45.1
- ICC A117.1-2017
- IAPMO/cUPC

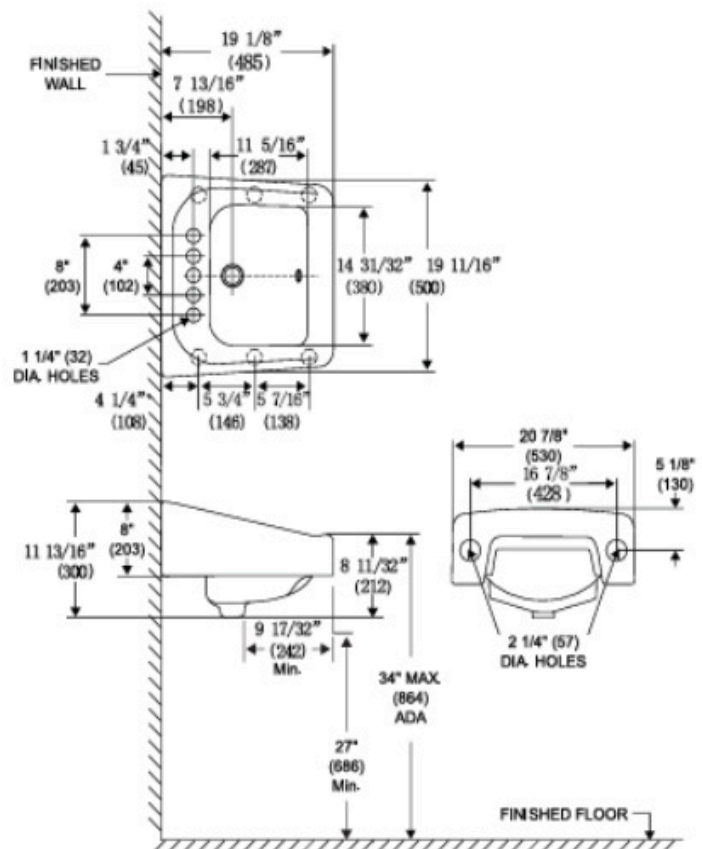


## Colors

- ☐ White (130)

Model 6620: 4" centers; consists of wall-mounted lavatory basin, 39 lb

Model 6622: 8" centers; consists of wall-mounted lavatory basin, 39 lb



Dimensions may vary (+) or (-) 1/4". Dimensions shown in parentheses are in millimeters: 25.4 mm = 1 inch. Note: Fixture dimensions are nominal and conform with dimension and performance requirements of ASME A112.19.2-2008/CSA B45.1-08 standards. PSI rating: 20 minimum to 80 maximum per ASME A112.19.2-2008/CSA B45.1-08 standards. Dimensions subject to change or cancellation without notice. Briggs is not responsible for the use of superseded or voided specification information.